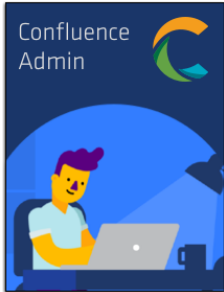


# Confluence Admin

<a href="#">Workflows</a>	<a href="#">Import</a>	<a href="#">Configuration</a>	<a href="#">Notifications</a>	<a href="#">Audit Log</a>	<a href="#">Advanced Configuration</a>
---------------------------	------------------------	-------------------------------	-------------------------------	---------------------------	--



## Overview

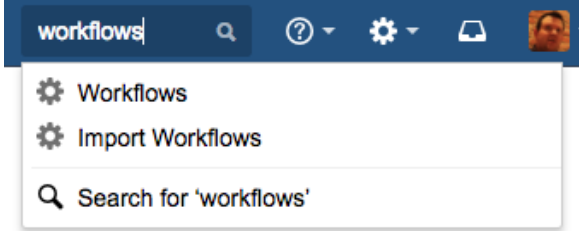
Workflow global settings can be found in  **General Configuration Workflows section**

You'll see a list of options:

- [Workflows](#)
- [Import](#)
- [Configuration](#)
- [Notifications](#)
- [Audit Log](#)
- [Advanced Configuration](#)

## Quick access to admin screens

You can quickly navigate to the administration screens via Confluence quick search. Just type in what you're looking for and you will see related admin screens at the top of the search results:



## See also

- [Installation](#)
- [Update / Change / Migrate](#)
- [Release Notes](#)

## Audience

This guide is for Confluence and System administrators.

## Related guides

