

Administration Guides

Administrator Roles

- **System Admins**
 - [Installing](#) and [upgrading](#) the app
- **Confluence Admins**
 - Manage [Global workflows](#), which are available to all spaces on the wiki
 - Global [app configuration](#) and [notification settings](#)
- **Space Admins**
 - Define which workflows are available in the space (see below for more details)
 - Space [app configuration](#) and [notification settings](#)

Space Workflow Management and Administration

There are two modes in which workflows can be applied within a space

Space Mode

- Enabled workflows listed on the space tools [Document Management Dashboard](#) are **automatically applied** to all content in the space
- If a workflow has filters ([content](#) and/or [label](#) parameters on the [{workflow} macro](#)), it will only be applied to content matching those filters
- Workflows are applied in the order in which they appear on the list in the Document Management Dashboard
- Once a workflow has been applied to a piece of content, no other workflows will be considered for that piece of content

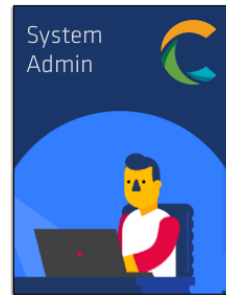
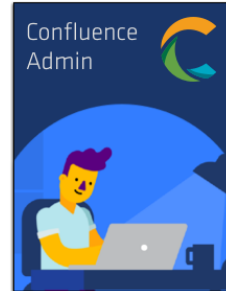
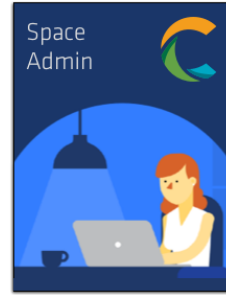
Page Mode

- Users can [manually add](#) any enabled workflow listed on the [Page Workflows Templates](#) dashboard to individual pages and/or blog posts
 - Doing so creates a new copy of the workflow – unique to the individual page or blog post
- Users can [create new workflows](#) – unique to the individual page or blog post
- Users can [edit workflows](#) – unique to the individual page or blog post
- Users can [save workflows](#) back to the Page Workflows Templates dashboard

Administration

- [Page vs. Space Mode](#)
- [Space Admin](#)
- [Confluence Admin](#)
- [System Admin](#)
- [Installation](#)
- [Update / Change](#)
- [Release Notes](#)
- [Compliance Guides](#)
- [Comala Remote Publishing - Release Notes](#)
- [Language Localization](#)
- [Confluence Mobile app](#)

Guides



Related Guides

Workflow
Authoring



Integration
Guides



Reporting
& Auditing



User
Guide



Support



Developer
Guides

